

VILLAGE OF PALESTINE, ILLINOIS

ORDINANCE NO. 2008-O- 12

AN ORDINANCE ANNEXING CERTAIN TERRITORY TO THE  
VILLAGE OF PALESTINE, CRAWFORD COUNTY, ILLINOIS

ADOPTED BY THE BOARD OF TRUSTEES  
OF THE VILLAGE OF PALESTINE, ILLINOIS  
THIS 6<sup>th</sup> DAY OF November, 2008

PUBLISHED IN PAMPHLET FORM BY AUTHORITY OF  
THE BOARD OF TRUSTEES OF THE VILLAGE OF PALESTINE,  
CRAWFORD COUNTY, ILLINOIS  
THIS 7<sup>th</sup> day of November, 2008.

  
\_\_\_\_\_  
FLOYD FULLER, Village Clerk

ORDINANCE NO. 2008-O- 12

AN ORDINANCE ANNEXING CERTAIN TERRITORY TO THE  
VILLAGE OF PALESTINE, CRAWFORD COUNTY, ILLINOIS

WHEREAS, certain properties are bounded by the Village of Palestine, Crawford County, Illinois, but have never been annexed to said Village; and

WHEREAS, Goodwine Real Estate Partnership, L.P., is the owner of said real estate and no electors reside thereon; and

WHEREAS, Goodwine Real Estate Partnership, L.P. has filed a PETITION FOR ANNEXATION of said territory to the Village of Palestine, Illinois, and

WHEREAS, it is determined to be in the best interest of the Village of Palestine, Illinois, that said territory be annexed thereto.

NOW, THEREFORE, BE IT ORDAINED by the Board of Trustees of the Village of Palestine, Crawford County, Illinois, as follows:

Beginning at a point 539.8 feet East of a point 1847 feet South and 50 feet East of the Northwest Corner of the Southwest Quarter of Section 34, Township 7 North, Range 11 West of the Second Principal Meridian, thence South 500 feet, thence East 435.6 feet, thence North 500 feet, thence West 435.6 feet to the point of beginning, containing 5 acres. Land described being located in the Southwest Quarter of the Southwest Quarter of Section 34, Township 7 North, Range 11 West of the Second Principal Meridian, State of Illinois.

Being indicated on a plat of the annexed territory which is appended to an made a part of the Ordinance, are hereby annexed to the Village of Palestine, Crawford County, Illinois.

2. That the Village Clerk is hereby directed to record with the Recorder of Deeds of Crawford County, Illinois, a certified copy of this Ordinance, together with the accurate map of the territory annexed.

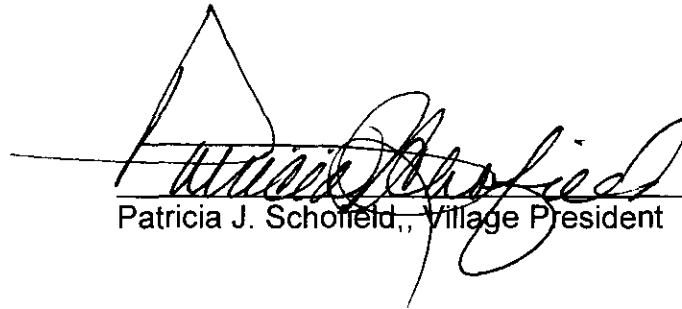
3. This Ordinance shall be in full force and effect from and after its passage, approval and publication in pamphlet form as provided by law.

Upon roll call vote the following Trustees voted yea:

HARRY G. PURCELL, GRETA DENNISON, WALT FRITCHIE,  
J. D. KIMBERLIN, AND LARRY SURRELLS. DAVID  
BRANSON WAS ABSENT.

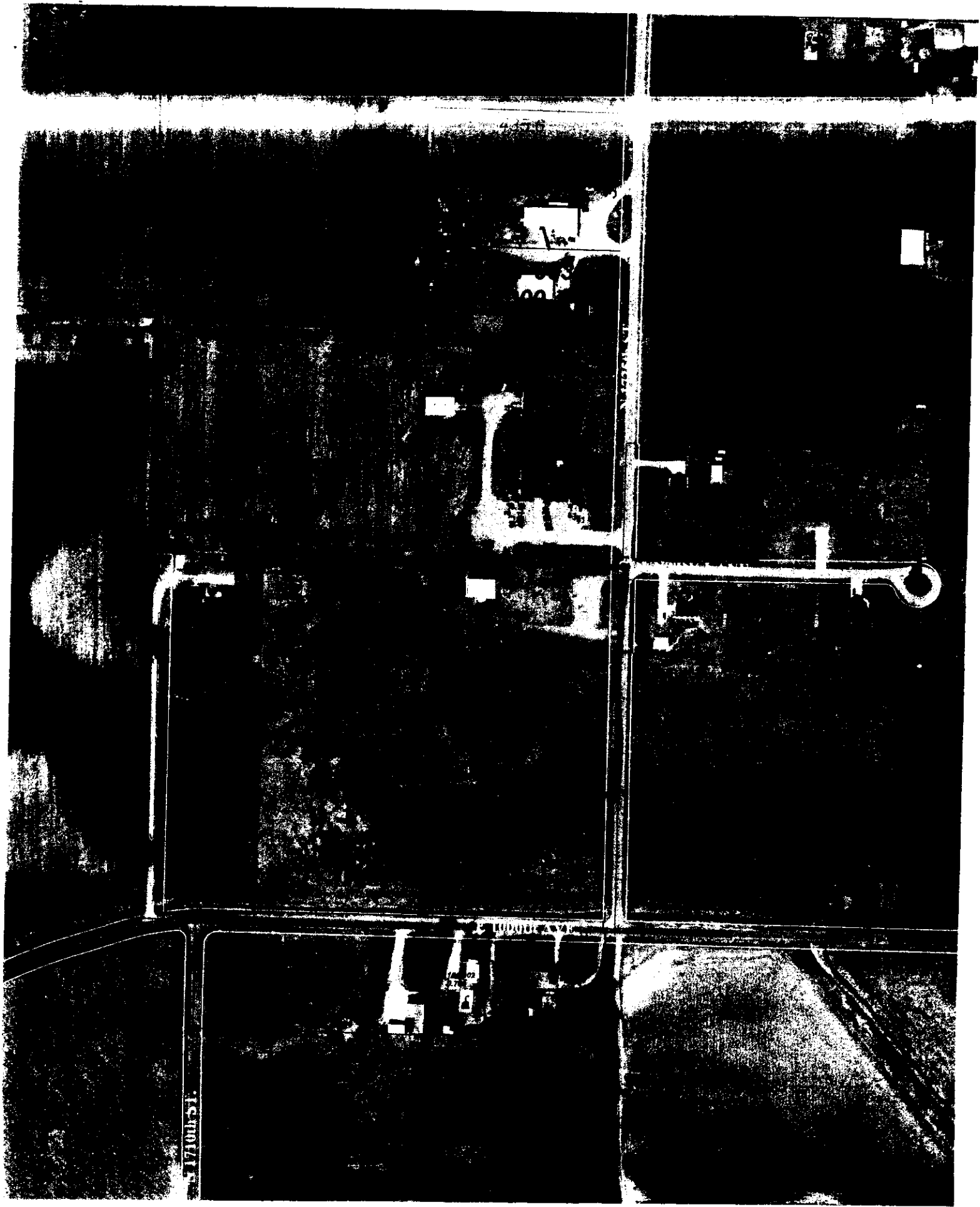
Upon roll call vote the following Trustees voted nay:

Passed, approved and published in pamphlet form this 6<sup>TH</sup> day of  
NOVEMBER, 2008.

  
Patricia J. Schofield, Village President

ATTEST:

  
Floyd Fuller, Village Clerk



171001-51.

F. LOONEY & CO.